



Habitats on the farm

2

Farmers have to make a profit from their business to make a living but they balance this with caring for the environment.

Here are further areas to explore to find out how farmers look after wildlife habitats.



Trees

What are hedgerow trees and why have their numbers declined?

<https://www.woodlandtrust.org.uk/mediafile/100210270/Wood-wise-summer-2014.pdf>

There are instances when cutting down trees can be a good idea! Find out about coppicing

http://www.countrysideinfo.co.uk/woodland_manage/coppice.htm



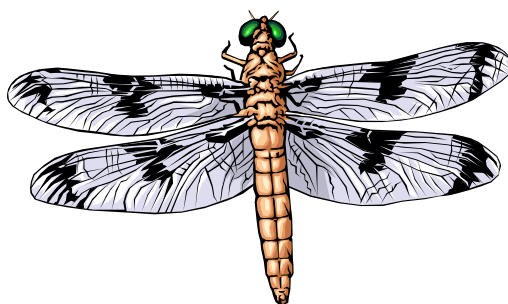
Ponds

In the twentieth century more than a million ponds were lost. Why were ponds once so important—what were their uses?

<http://www.norfolkbiobiodiversity.org/actionplans/habitatactionplans/ponds.aspx>

Why are ponds important for wildlife?

<https://sussexwildlifetrust.org.uk/discover/in-your-garden/article/14>



What are some of the creatures that benefit from ponds on the farm?

Which pond animals are endangered?

<http://yppte.org.uk/factsheets/ponds/endangered-pond-animals#section>

Why do ponds need cleaning?

http://www.ehow.co.uk/how_5851824_clean-out-farm-pond-hand.html

Ditches

Which animals can benefit from ditches?

<http://adlib.everysite.co.uk/adlib/defra/content.aspx?doc=30391&id=38883>

Why do ditches need to be managed for wildlife?

<http://www.rspb.org.uk/ourwork/farming/advice/details.aspx?id=204265>

Farm buildings

How can farm buildings be habitats for wildlife?

<http://www.rspb.org.uk/forprofessionals/farming/advice/details.aspx?id=204682>



Learn more about the habitat barn owls need

<http://www.barnowltrust.org.uk/infopage.html?Id=199>